

Cogent Wholesale Colocation



282 S Sycamore – Rialto, CA

For informational purposes only.

Cogent does not guarantee the information set forth and it may be changed without notice

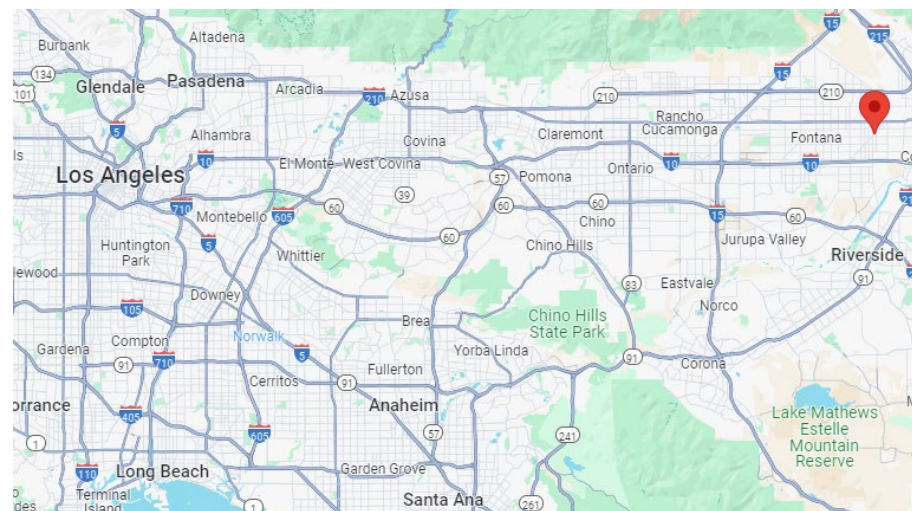


General Information

Conveniently located outside Los Angeles, near San Bernardino and Riverside, Cogent's Rialto data center is a 45,610 sq ft secure facility with 3.00 MW of power. Facility sits on 4.4 acres zoned for Commercial Use, allowing for potential expansion. Additional power availability being verified with utility provider, Southern California Edison.

Offering 2.42 MW of protected power and 17,200 sq ft of wholesale colocation space, this data center is ideally situated to serve customers in the Rialto area and throughout the Southwestern region.

As a carrier neutral facility, available carriers include Cogent, Time Warner, Pacific Lightwave, Edison Carrier Solutions (ECS), AT&T with the ability to bring in additional carriers and dark fiber providers as required.



Cogent Orange County – 282 S Sycamore Ave



Key Features

Facilities

- Two 480v 3-phase utility feeds - at 2500 amps each
- Utility Provider Southern California Edison
- Total 45,610 sq ft of space, 17,200 sq ft available for wholesale

Security

- Multiple cameras tied into software with recording and 24/7 monitoring capabilities
- Card reader access control system
- Gated facility - card swipe required for access

Fire Systems

- Vesda air sampling smoke detection system
- Fire suppression & detection system consists of smoke detectors and life safety devices

Key Features

Generator Systems

- Two 1500 kW Diesel Power Standby Generators, each with 2000 amp Automatic Transfer Switch, one 750kW Diesel Powered Standby Generator with 1600 amp ATS
- Each standby generator has individual diesel fuel system, including sub base fuel tanks, separate fuels tanks with day tanks & fuel monitoring systems.

HVAC

- Two 360 Ton Water Cooled Chillers with associated Cooling Towers N+1 Redundancy
- Two 200 Ton Air-Cooled Chillers N+1 Redundancy
- Two 40 HP Chilled Water Pumps N+1 Redundancy, two 20 HP Condenser Water Pumps N+1 Redundancy, two 15 HP Chilled Water Pumps N+1 Redundancy
- Three 75 Ton, two 20 Ton & two 10 Ton Chilled Water Air-Handling Units N+1 Redundancy
- Seven 30 Ton Chilled Water Computer Room Unites N+1 Redundancy
- Chilled Water Air Handling Units (N+1 Redundancy) to service data center rooms/areas

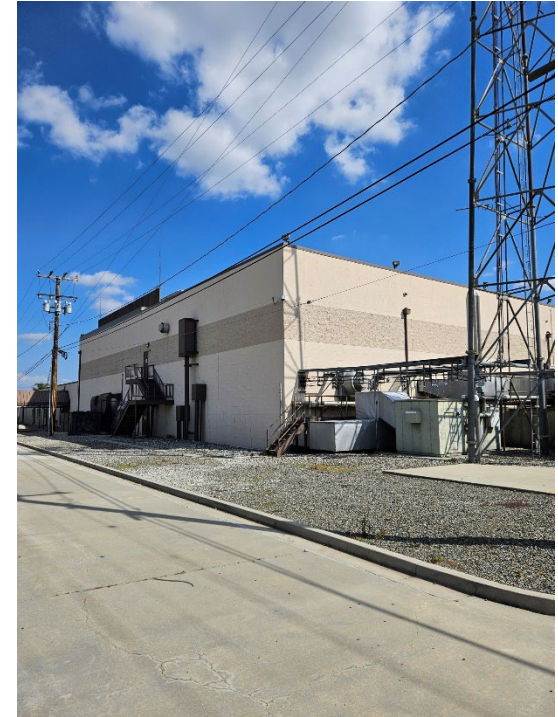
Photos



Cogent Orange County – 282 S Sycamore Ave



Photos



Cogent Orange County – 282 S Sycamore Ave



Cogent Data Center Opportunity

Why Cogent

- Flexible terms: Available to Purchase, Master Lease, Wholesale Colocation
- Low capital investment compared to expense of building your own facility
- An institutionally built and owned data center
- Disaster proof - designed to withstand hurricane force winds and other natural disasters
- Professionally maintained: maintenance, inspections and replacements routinely performed
- Speed to market - our data center is ready for you to customize and move into
- Leverage the Cogent backbone for customer connectivity, or use other carriers
- Available wave services to provide low-latency connectivity to your other facilities

Want to learn more?

Contact Greg Davis

gdavis@cogentco.com

212-625-4778

Cogent Orange County – 282 S Sycamore Ave

